

Exhibition

The Cat That Slept for a Thousand Years



Written by Amber Stother, Venture Arts

**Venture
Arts** ~ ~

Introduction to Amber

Hi, I'm Amber ...



I am the Public Engagement Assistant at Venture Arts. A visual arts organisation working with learning disabled and neurodivergent artists.

**Venture
Arts** ~ ~

I have made this easy read guide to Manchester Museum's exhibition *The Cat that Slept for a Thousand Years* to help people understand what it is about in a simple way.

I enjoy making easy read guides because they help people who have a learning disability or are neurodivergent enjoy exhibitions and get more out of them.



Key Information

The exhibition starts with a video that plays for **four minutes**. The film might be a bit noisy for some visitors.



The exhibition runs from
19 July - 14 September 2025

It is open 10.00am-5.00pm
every day.



On Wednesdays it is open late
until 9pm.



Who is the exhibition by?

Manchester Museum have worked with Air Giants on this exhibition. Air Giants make amazing giant robotic creatures and spaces.



Air Giants have made robots for different events around the world.

Including:

- Cinekid Festival in Amsterdam
- Tai Kwun Art Centre in Hong Kong
- Playable City Showcase in Bristol
- The British Library
- V&A Museum in London
- King's College London's
- Science and Gallery London



Air Giants' studio is in Bristol.



What is the exhibition about?

It's about a giant cat that is 10 metres long.

We learn the story of the cat:



It was found in the Antarctic by scientists.



The scientists study it and find out how it got there, what kind of things it likes (music, being stroked, people touching it) and how to look after it.



They learn that the cat will be asleep for 1000 years.



Visitors of all ages can come up close stroke and touch the cat while it soundly sleeps.



They can also peacefully watch the cat and there are beanbags available for you to relax on whilst you listen to the cat purr.



One of the themes of the exhibition is care. This is an important value for Manchester Museum.

Thinking about caring for the cat makes visitors think about caring for the environment and looking after things.



What will you see in the exhibition?

In the first room there is a 4-minute video which tells you about the journey of the cat.



On the walls in the first room are pictures about the story of the cat and how it came to the museum.



In the second room you see an Xray of the cat and some examples of smaller cats' skeletons.



In the third room you will see the cat, which is 10 metres long.

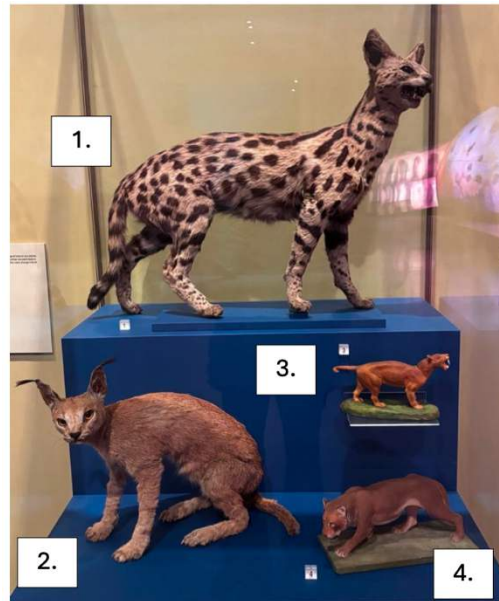
The cat glows and the rest of room is quite dimly lit.

The cat's tail and ear move.



You will also see cabinets with objects that tell us about humans' relationship with cats through history.

You will see pottery, taxidermy animals and drawings.



Towards the end of the exhibition, there are pictures of other people's cats which you can take a picture of.



There is a drawing area where you can draw what you think the cat is dreaming about or write your own message to the cat.



What will you hear in the exhibition?

When you first arrive at the exhibition you will hear the 4-minute video playing.



When you move into the main exhibition space you will hear the cat purring whilst it is sleeping.

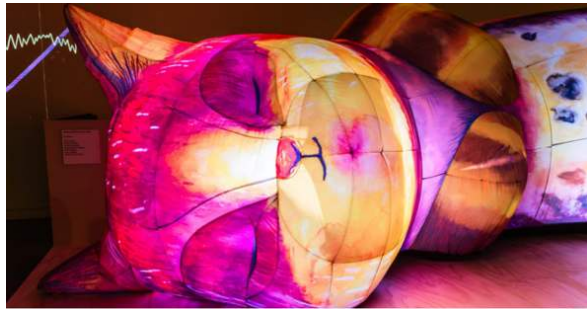


The sound is at a medium level throughout the exhibition.



Amber's Highlights

Was seeing the cat as I have never seen anything like it before and getting to go up close and stroke the cat.



I also like that there are beanbags, where you can relax and listen to the cat, this is because you can zone out of everything around you.



I like the drawing area because it lets you be creative and express how you feel. It makes you try something new.



I like the selfie area where you get to take a picture with everyone's cats because I love cats. It makes me feel happy and excited to see everyone's cats.



I like hearing the cat whilst it sleeping it makes it seem like the cat is real when you listen to the sounds.

