

The University of Manchester
The Manchester
Museum

MANCHESTER
1824

MAP

...there's much more at The Manchester Museum



The Manchester Museum, The University of Manchester,
Oxford Road, Manchester, M13 9PL
tel 0161 275 2648 email museum@manchester.ac.uk
www.manchester.ac.uk/museum

Welcome to The Manchester Museum. We hope this map helps you find your way around the Museum. If you do get lost, just ask a member of staff.

Copies of this map are available at the Information Point in different formats.

Please help us protect our collections from the pests that live on crumbs by only eating and drinking in the Picnic Area on Floor 3. Thank you.

Floor B



Schools' Lunchroom

Floor G



Museum Entrance



Information Point



Lockers



Shop



Café



Discovery Centre: Open weekends and holidays, 11am-4pm for object handling, drawing and other activities.



Temporary Exhibitions



Rocks & Minerals: Rocks, minerals and the formation of the Earth.



Fossils: Plant and animal fossils including Stan the *T.rex*.


Mezzanine Floor


 **Meteorites and the Earth in space**


Floor 1




 **Ancient Egypt:** Everyday objects and mummies explain the cycle of life and death in ancient Egypt. *Closed from Jul 2011. Ancient Worlds opens Dec 2012.*

 **Manchester Gallery:** Uncover the links between our collection and the people and history of Manchester.


 **Living Cultures & Archery:** Objects made and used by people, revealing different cultures.


 **Nature Discovery:** Exploration area for families with younger children.

 **Living Worlds:** Explore the connections between all living things, including us and help shape the future.


 www.livingworlds.co.uk


Floor 2

 **Money:** Ancient, medieval and modern money.

 **Archaeology:** Roman, Greek and other objects. *Closed from Jul 2011. Ancient Worlds opens Dec 2012.*

Kanaris Lecture Theatre


 **Live Animals:** Live reptiles and amphibians including frogs and snakes.


 **Birds & Insects:** Birds, butterflies and creepy crawlies.

Floor 3




 **Temporary Exhibitions**

 **Resource Centre:** Research, draw and handle objects not on display.

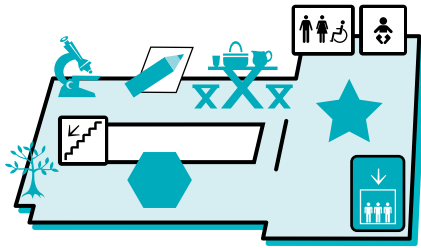
 **Greenhouse:** Learn how the fruit you eat grows.

 **Life Lab:** Education space.

 **Play + Learn:** Read, draw and relax with your family.

 **Picnic Area**

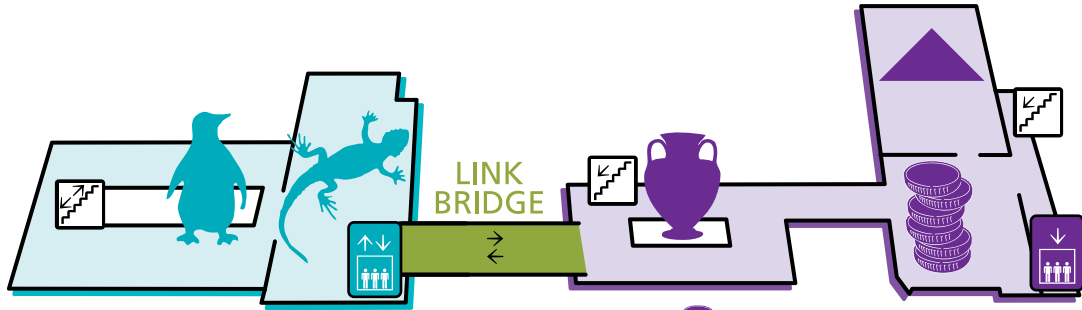
3



- ★ Temp Exhibitions
- ⬡ Resource Centre
- ❄ Greenhouse

- 🔬 Life Lab
- 📖 Play + Learn
- 🍽 Picnic Area

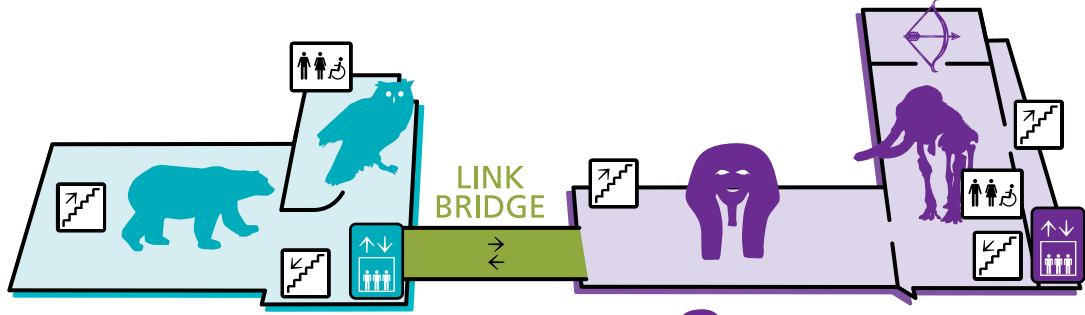
2



- 🦎 Live Animals
- 🐧 Birds & Insects

- 🪙 Money
- 🏺 Archaeology
Closed from Jul 2011
Ancient Worlds opens Dec 2012
- ▲ Kanaris Lecture Theatre

1



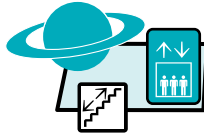
Nature Discovery



Living Worlds



Meteorites
(Mezzanine Floor)



Ancient Egypt

Closed from Jul 2011

Ancient Worlds opens Dec 2012

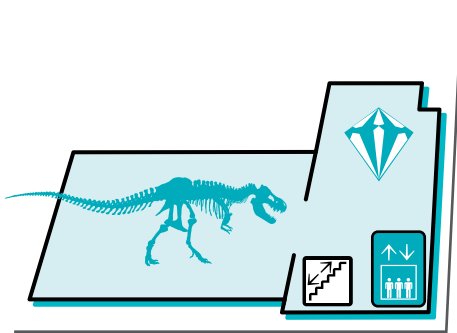


Manchester Gallery



Living Cultures & Archery

G



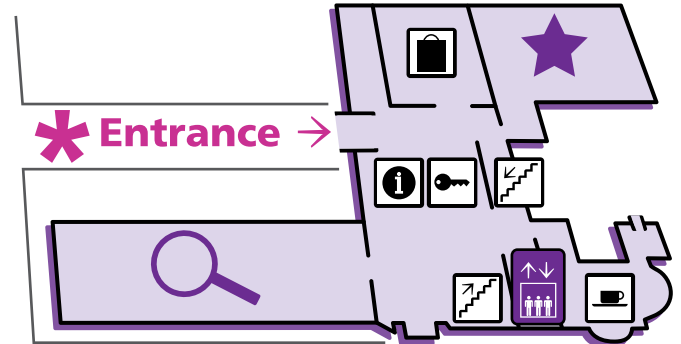
Oxford Road



Rocks & Minerals

Fossils

Coupland Street



Oxford Road

*** Entrance** →

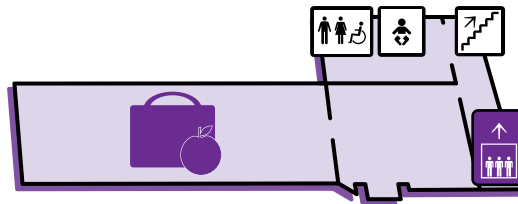


Discovery Centre



Temp Exhibitions

B



 Schools' Lunchroom

Key

-  Information


-  Café


-  Lockers


-  Shop


-  Accessible Toilet

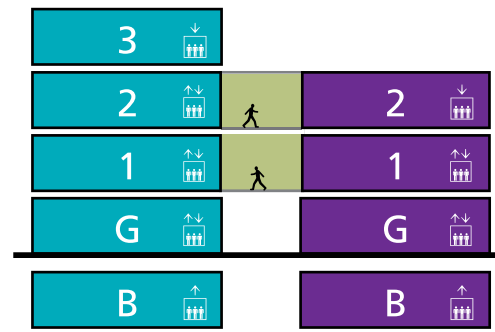
-  Baby Change

-  Stairs

-  Link Bridge

-  Lift

-  Lift



Museum floors at a glance

Sign up for e-news



Sign up online www.manchester.ac.uk/museum